

Coral

مدرسة المرجان العالمية

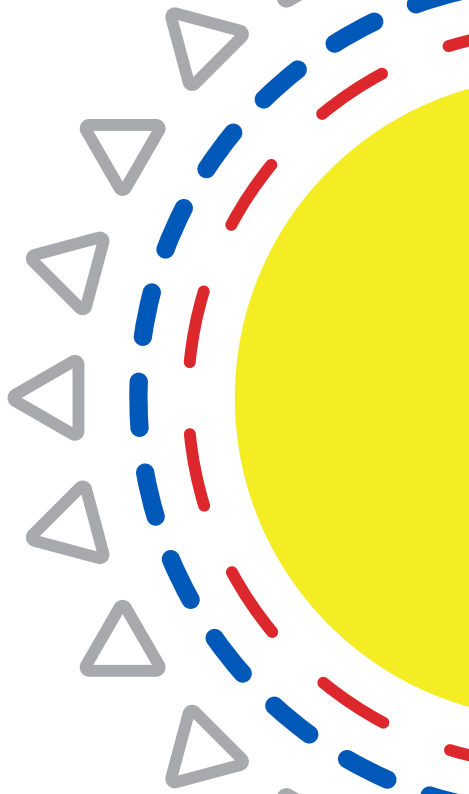
Coral International School



www.coralschool.edu.sa



Coral International School



CORAL INTERNATIONAL SCHOOL is a well-established school catering exclusively for the education and academic development of children from the expatriate community residing in Jeddah. Operating as a fully licensed school within the Saudi Arabian International School System, **CIS** with its commitment to excellence offers high-quality education for children from ages 3 to 17 years inclusive. We offer a challenging American educational program with an international perspective to children from many nations. We encourage children to bring their various cultures to what is best in American educational methodology. In fact, **CIS** strongly believes that making education an 'experience' for children is the right strategy for a long-term and fruitful learning.

We are committed to developing an educationally rich experience where we challenge our students to build within themselves the foundations for life-long learning. With coaching and encouragement, we hope to empower our students to become contributors in the global society.

SCHOOL COMMUNITY

Coral International School has two branches the main branch that accommodate students K-12 is located at Al Rawdah District, one of the up-scale neighborhoods of Jeddah and the New branch that accommodate students from Nursery -3 is located at Al Murjan District **one** of the up-scale neighborhoods of Jeddah.

CIS strongly believes that making education an 'experience' for children is the right strategy for a long-term and fruitful learning.

We believe that school should be a place where children are excited to go. We are working to build a world where they jump out of bed on weekdays, a world where they look forward to Sunday mornings.

OUR VISION

To instill the 21st century skills and to inspire lifelong learning in every student.

OUR MISSION

Coral International School endeavors to provide a high-quality learning environment that is disciplined, safe, and nurturing based on the 21st century skills.



LEARNING OUTCOME



PURPOSEFUL DESIGN

CURRICULUM

Coral International School has a curriculum that is increasingly guided by a purposeful design. This is to ensure that all students practice and achieve each of the school's learning expectations. The school purpose – especially the beliefs – has a consistently growing influence in the development and review of the school's curriculum. The school's annual curriculum review compares the entire curriculum against its ability to advance those beliefs and to enhance the achievement of the school's learning expectations.

The school has developed a common template and format to ensure that all curriculum documents include the necessary parts.

PURPOSEFUL DESIGN

CURRICULUM

The curriculum, to varying degrees, emphasizes depth over breadth. It also emphasizes these key components to the greatest extent possible:

Inquiry and
problem-solving

Cross-disciplinary
learning

Informed and ethical
use of technology

Higher order
thinking

Authentic learning
opportunities

The curriculum at **CIS** is designed to offer a full range of college preparatory subjects. It also provides a sound academic background for students who do not intend to pursue a college education.

The curricular, methodology, technique and references are all based on the American System of schooling, which we find most befitting for the culture and diversity of our students. This, thereby, enables the child, after graduating with a High School Diploma, to attend post graduate studies at university or college.

FACULTY

Our professional academic staff consists of qualified, experienced and highly dedicated teachers representing 11 different nationalities. The school provides maximum opportunities for continued professional development through workshops, in addition to our in-house workshops run by qualified leaders.

SCHOOL FACILITIES

Our schools facilities are built according to international specifications. The buildings are fully air-conditioned and equipped with security cameras throughout the corridors and campus. Wireless internet connection covers every office and classroom in the school. Further, all classrooms at Al Rawdah branch are equipped with data show. **CIS** Al Murjan branch classrooms are equipped with interactive white boards and intercom for the purpose of immediate monitoring. **CIS** facilities include the following:

AL MURJAN BRANCH



Science Lab



Clinic



Library



Computer Lab



Cafeteria



Outdoor Covered Play Area
Indoor Air-conditioned Play Areas
Corner room



Art room

AL RAWDAH BRANCH



Boys section
Girls section



2 School Clinics



Girls section
Boys section*



Boys section
Girls section



KG section

Outdoor Covered Play Area with sand bins
Corner Room

2 Indoor Air-conditioned Play Areas

Boys section

Girls section



Art Room



Gym



Praying Room

Girls Section

EXTRA-CURRICULAR AND CO-CURRICULAR ACTIVITIES

In the interests of the holistic development of the student, the school offers numerous extra-curricular and co-curricular activities throughout the year which promote physical, emotional and social growth. The school offers an extensive After School Activity Program. **CIS** also involves students in many sporting, cultural and academic activities which link directly to the curriculum including:

Sports Day

Student Open Days

International Day

Science & Math Fair

Health Day

100th Day in School

Earth Day, field trips

Student Council

Prefect System and various exhibitions.



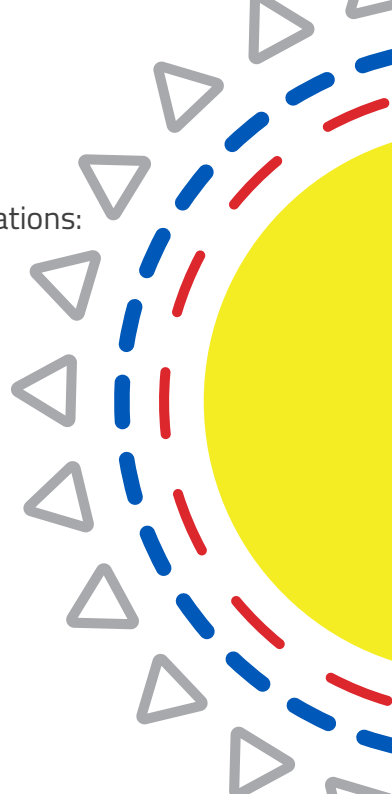
AUTHORIZATION :

CIS is authorized as IB candidate for the PYP-MYP programs.

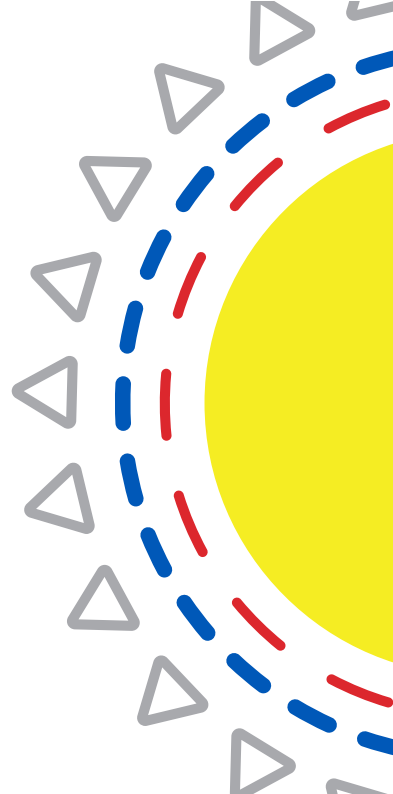
School code: 060971

ACCREDITATIONS

The school is accredited by the following organizations:



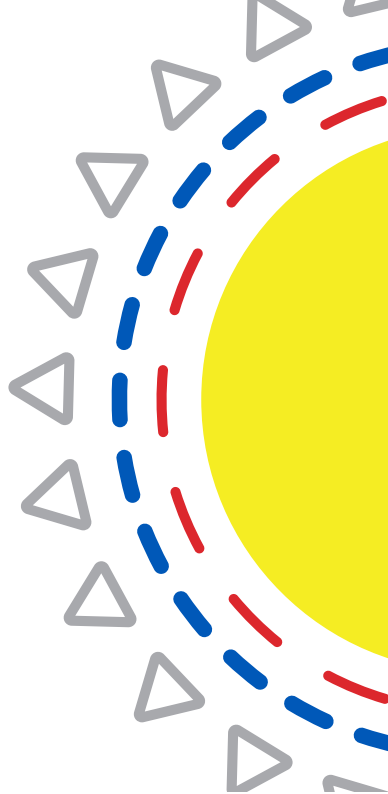
MURJAN BRANCH



ANNUAL FEES

Level	Age group	Tuition fee	Terms for payment (2 Installments)
Nursery	6 months - 3 yrs	20,000	10,000 x 2
KG1	3 - 4 yrs	22,000	11,000 x 2
KG2	4 - 5 yrs	22,000	11,000 x 2
KG3	5 - 6 yrs	22,000	11,000 x 2
Grade 1	6 - 7 yrs	23,000	11,500 x 2
Grade 2	7 - 8 yrs	23,000	11,500 x 2
Grade 3	8 - 9 yrs	23,000	11,500 x 2

--- RAWDAH BRANCH ---



ANNUAL FEES

Level	Age group	Tuition fee	Terms for payment (2 Installments)	Miscellaneous
KG1	3 - 4 yrs	18,400	9200 x 2	-
KG2	4 - 5 yrs	18,400	9200 x 2	-
KG3	5 - 6 yrs	18,400	9200 x 2	-
Grade 1	6 - 7 yrs	18,000	9000 x 2	1200
Grade 2	7 - 8 yrs	18,000	9000 x 2	1200
Grade 3	8 - 9 yrs	18,000	9000 x 2	1200
Grade 4	9 - 10 yrs	19,000	9500 x 2	1200

ANNUAL FEES

Level	Age group	Tuition fee	Terms for payment (2 Installments)	Miscellaneous
Grade 5	10 - 11 yrs	19,000	9500 x 2	1200
Grade 6	11 - 12 yrs	19,500	9,750 x 2	1200
Grade 7	12 - 13 yrs	19,500	9,750 x 2	1200
Grade 8	13 - 14 yrs	19,500	9,750 x 2	1,200
Grade 9	14 - 15 yrs	20,000	10,000 x 2	1,200
Grade 10	15 - 16 yrs	20,700	10,350 x 2	1,200
Grade 11	16 - 17yrs	21,000	10,500 x 2	1,200
Grade 12	17 - 18 yrs	21,800	10,900 x 2	1,200

2020 - 2021

Registration fees for New Students are **SR 2,500 (not refundable)** .

Re-registration fees for the Academic year 2020 - 2021 is SR 3,000 deductible from (SY 2020 - 2021 Tuition Fees).

Tuition Fees are due at the beginning of each term (Fees should paid in advance on first day of each semester).

Only KG Section books are included in the tuition fees. Grades (1 - 12)books are not included.

Miscellaneous fees include Stationary Tools, Art supplies, Class photograph and field trips (any extra field trips will require extra payment).

Transportation Fees will be set on two packages. For more information, please refer to the Accounts Department.

Family Discount is 5% of annual tuition fees for the 2nd and 3rd child, 10% Discount will be granted to the parent who pay full tuition fees for the academic year in advance.

Uniforms are not included .

As per the **General Authority of Zakat & Tax**, the **VAT (15%)** will be applicable on all school payments (yearly tuition fees, school uniform, jacket uniform, PE uniform, books, transportation fees, etc..) on **NON-SAUDI STAUDENTS ONLY.**

*** Payments are not refundable.**



FOR JOBS



info@coralschool.edu.sa

ADMISSION

Al Rawdah Branch



Boys Section

0556100544



Girls Section

0554460299

Al Murjan Branch



0530222806

Academic Affairs :



Haddadh@coralschool.edu.sa



HaniBitar@coralschool.edu.sa



050 652 2260



CONTACT US

CHEIF EXECUTIVE OFFICER



mdahlan@coralschool.edu.sa



054 641 9991

BOYS SECTION



rakan.m@coralchool.edu.sa



0548580680

GIRLS SECTION



ddahlan@coralschool.edu.sa

Al Murjan Branch



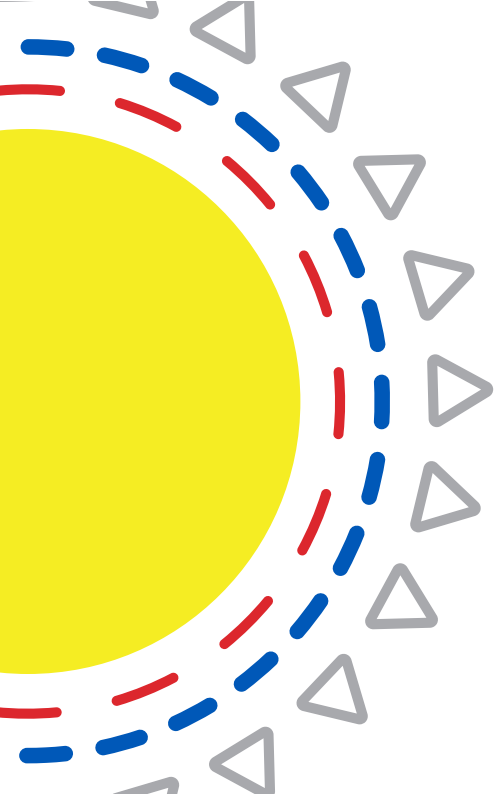
Ddahlan@coralschool.edu.sa



Alghalibo@coralschool.edu.sa



mullan@coralschool.edu.sa



VISIT US



schoolcoral



CORAL.CIS



coral.int.school



www.coralschool.edu.sa

AL Rawdah Branch



coralrawdah19

Al Murjan Branch



cpreschool8

للاستفسارات أو الشكاوي



Info@coralschool.edu.sa



0556615604